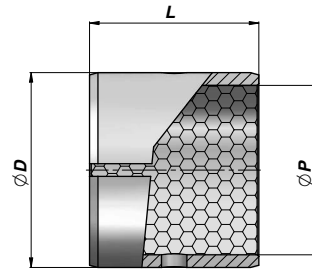
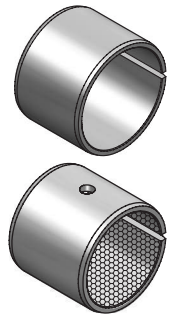


TYPE HSLBU



TYPE HSLBX



Code Type HSLBU	Code Type HSLBX	ØP	ØD	L	kg x 100
HSLBU020023010	HSLBX020023010	20	23	10	0,80
HSLBU020023020	HSLBX020023020	20	23	20	1,50
HSLBU025028015	HSLBX025028015	25	28	15	1,40
HSLBU025028020	HSLBX025028020	25	28	20	1,90
HSLBU025028025	HSLBX025028025	25	28	25	2,40
HSLBU030034020	HSLBX030034020	30	34	20	3,10
HSLBU030034030	HSLBX030034030	30	34	30	4,60
HSLBU030034040	HSLBX030034040	30	34	40	6,20
HSLBU035039020	HSLBX035039020	35	39	20	3,60
HSLBU035039030	HSLBX035039030	35	39	30	5,40
HSLBU035039040	HSLBX035039040	35	39	40	7,20
HSLBU035039050	HSLBX035039050	35	39	50	9,00
HSLBU040044020	HSLBX040044020	40	44	20	4,10
HSLBU040044030	HSLBX040044030	40	44	30	6,10
HSLBU040044040	HSLBX040044040	40	44	40	8,20
HSLBU040044050	HSLBX040044050	40	44	50	10,20

MATERIAL :
 HSLBU = STEEL + PTFE
 HSLBX = STEEL BRONZE + POM