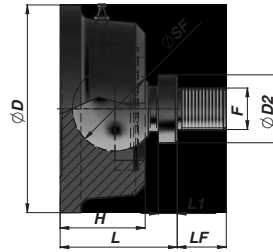


TYPE A



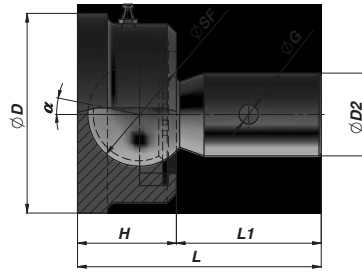
TYPE B



Code	Type	ØSF	ØD2	ØD	L	H	L1	F	LF	FC (kN)	kg
HSEB0001980	A	45	30	110	62	45	9			107,8	2,20
HSEB0001982	A	55	45	95	78	55	8			147	2,88
HSEB0001984	A	65	64	107	88	58	9			225,5	3,96
HSEB0001986	B	45	30	110	61	45		M22x1,5	26	107,8	2,42
HSEB0001988	B	55	45	95	78	55		M32x2	35	147	3,10

FC = MAX DYNAMIC LOAD

MATERIAL STEEL - UNI C40



Code	ØSF	ØD2	ØD	L	H	L1	ØG	α	FC (kN)	kg
HSEB0001700 (*)	45	36	88	106	43	63		25	78,4	2,18
HSEB0001701 (*)	45	36	88	106	43	63	8,4		78,4	2,40
HSEB0001702 (*)	55	36	92	118,5	53,5	65	8,4		137,2	3,10

FC = MAX DYNAMIC LOAD

(*) = GREASE NIPPLE IS TILTED OF ABOUT 6° TO FACILITATE GREASING -

MATERIAL STEEL - UNI C40